



KEY INFORMATION

Song Leader Training with Susie Ro Prater

Everyone welcome, no experience or music theory needed!

DATES

- SATURDAY 15TH NOVEMBER 2025 | Online Welcome | 4.00-6.00pm (UK time)
- THURSDAY 17TH - SUNDAY 30TH NOVEMBER 2025 | 3 Night Residential | Totnes, Devon, UK
- SATURDAY 10TH JANUARY 2026 | Online Follow Up 1 | 4.00-6.00pm (UK time)
- SATURDAY 7TH FEBRUARY 2026 | Online Follow Up 2 | 4.00-6.00pm (UK time)
- SATURDAY 7TH MARCH 2026 | Online Follow Up 3 | | 4.00-6.00pm (UK time)

Optional peer-led sessions:

- SATURDAY 24TH JANUARY 2026 | Online Peer-Led 1 | 4.00-5.30pm (UK time)
- SATURDAY 21ST FEBRUARY 2026 | Online Peer-Led 2 | 4.00-5.30pm (UK time)

If you are outside of the UK, you can convert your time [here](#).

WHAT'S INCLUDED

- 3 night residential training (including audio recordings with notes)
- 4 x 2 hour online sessions (including video & audio recordings)
- 2 x 1.5 hour online peer-led sessions
- Sharing the Music song leader notes, containing all the key aspects of the training
- Sharing the Music start up CD pack (audio files for 12 easy harmony songs and their parts)
- Participant WhatsApp group for announcements, connection, encouragement and inspiration
- 20% discount on Susie's 'Until the World is Singing' songbook
- 20% discount on Nick Prater songbooks & CDs
- 1-2-1 mentoring sessions (optional extra)

COST & PAYMENT

£720 - This includes all of the online sessions and the in-person residential training, accommodation and food (additional room tier & single supplements may apply).

A deposit of £200 is required on booking and your balance payment will be due by 16th October 2025. Anyone booking after this date will need to pay the full amount.

TRAINING FORMAT

ONLINE WELCOME

This session is an opportunity for the group to meet each other, introduce themselves, share some of their goals for the training and ask any questions. It is also a chance for those who have never worked with Susie to meet her. This session will allow us to dive straight in at the residential.

3 NIGHT RESIDENTIAL

This will be the core part of the training, where Susie will guide you through the many aspects of becoming a song leader. It will be an embodied, fun, deep and experiential 3 days, with the opportunity to really put everything learnt together into practice. It will also be a chance to build connections with those who you will continue to journey with via the online follow up sessions and community group.

There will be audio recordings of all the main sessions and comprehensive notes sent after the residential, to allow for as fully immersive experience as possible (if taking notes helps you learn, that's fine too).

Sharing Songs

During the residential everyone will have the chance to teach one or two short and simple songs/warm ups to the main group and/or in a smaller break out group. This is a great opportunity to put into practice the things that you've learnt, learn from each other and get valuable and constructive feedback.

ONLINE FOLLOW UP SESSIONS

These 3 follow up sessions will be an opportunity to come together again, ask questions and share progress and goals. Susie will be touching on additional elements of song leading and there will be a chance to share a short song in break out groups to practice your skills and to explore how sharing online feels.

These will also be an opportunity to deepen your connection with each other and strengthen the web of community you will be building throughout the training, so you can continue to lean into and support each other as you move forward in your song leader journey.

WHATSAPP COMMUNITY GROUP

We ask that everyone has access to WhatsApp for the lead up and duration of the training, as this will be the space to connect with Susie and your fellow participants, receive important announcements, ask questions, share resources and support and encourage each other. The group will remain open once the training is complete, so you can stay in touch and share your ongoing song leading journeys.

RESIDENTIAL TRAINING LOCATION & VENUE

TOTNES, DEVON, UK

Totnes is a fascinating historical town which combines stunning countryside with independent shopping, local food and drink and interesting attractions. Located in the heart of South Devon on the banks of the River Dart, it is a unique and charming town that has an international reputation for its lively and diverse community and relaxed atmosphere.

If you would like to extend your stay before or after the training at Sharpham House, you will find plenty of independent accommodation available in Totnes.

VENUE

Sharpham House, Ashprington, Totnes, Devon, [TQ9 7UT](#), UK

Arrivals: [Thursday 27th November 2025](#) | BETWEEN 3.00-5.00pm

Departures: [Sunday 30th November 2025](#) | BY midday

This beautiful historic house is positioned within a designated Area of Outstanding Natural Beauty, close to nature and amid breath-taking scenery high above the River Dart.

They offer delicious, home cooked, seasonal vegetarian food, sourced whenever possible from their organic kitchen garden and local food suppliers. They can cater for the following dietary requirements: vegan, dairy-free, diabetic, wheat/gluten-free, coeliac, no alliums and no nightshades.

Any other medical dietary needs would need to be discussed with Sharpham before booking, as they may not be able to accommodate them.

GETTING TO SHARPHAM HOUSE

Car

Sharpham Estate is three miles outside of Totnes, on the edge of Ashprington village. Driving directions will be sent nearer the time.

Train

Frequent direct trains run from London, Birmingham, and the North. The journey time by train is less than three hours from London Paddington via [GWR](#) and under four hours from London Waterloo. Find train times and buy tickets from [Trainline](#) (tickets are released 12 weeks in advance).

Trains to Totnes are on the Exeter, Plymouth and Penzance lines. Totnes railway station is a 5-10 minute walk from the town.

Coach

The journey time by [National Express](#) coach is just over six hours from London, (Victoria Coach Station, Departures Hall) and the route travels via Heathrow Airport, (Central Bus Station). The coach is the 501 - Route Exeter, Torbay to Heathrow Airport and London.

Flying

The closest airports to Totnes are:

Exeter Airport (1 hour away) | Bristol Airport (2 hours away) | Heathrow Airport (3.5 hours away)

ACCOMMODATION

There are three tiers of accommodation available, with both shared and single options available in each. You can make your own hot drinks in each room, and towels are provided.

Because Sharpham House is a Grade 1-listed mansion (with limits to the changes they are allowed to make to the building), few bedrooms come with an en-suite bathroom and toilet. There are shared bathrooms on every floor.

You can select your room preference at booking and rooms will be allocated on a first come first served basis.

STANDARD ROOMS



£720 (shared twin/double room)
£770 (single occupancy room)

These are smaller rooms but still cosy and comfy.

PREMIUM ROOMS



£740 (shared twin/double room)
£790 (single occupancy room)

These attractive rooms have good views of the stunning countryside

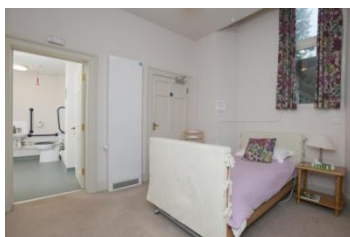
HERITAGE ROOMS



£760 (shared twin/double room)
£810 (single occupancy room)

These larger, historic rooms have beautiful views of the surrounding grounds and parkland. Some, not all, are en-suite.

ACCESSIBLE ROOM



£720 (Please only book this room if you have a genuine access need)

An accessible ground-floor single room, located close to the lift, with an accessible en-suite bathroom and bed.

You can find more details about accessibility at Sharpham House [here](#).

Non-Residential

Due to the training schedule and to allow everyone to have a space to relax between sessions, the training will be **residential only**.

CANCELLATION POLICY

61+ days from the training start date: Full refund, minus a £10 admin fee.

31-60 days from the training start date: There is no refund for the £200 deposit at this stage. *

0-30 days from the training start date: Any money paid at this stage is non-refundable. *

* **If we can fill your place:** Get in touch as soon as possible if you need to cancel and we will do our best to re-sell your place. If this is possible, the following charges will apply:

Cancelling **more than 14 days** from the training start date: You will receive a full refund, minus a £50 admin fee.

Cancelling **less than 14 days** from the training start date: You will receive a refund, minus your £200 deposit.

If we need to cancel (this would only happen under exceptional circumstances) we will notify you as soon as possible and will refund you any money you have paid. We cannot be held liable for any expenses which you may have incurred, such as travel, hotels or exchange rate losses.

All participants must take full responsibility for themselves and accept the potential health risks associated with coming together as a group. For the protection of the venue staff and other participants, we ask you not to attend the residential if you have an infectious illness.

Life can be unpredictable, so we strongly recommend you take out insurance to protect against illness, travel disruption and unforeseeable circumstances which may prevent you from attending the training.

Please make sure you have also read the [booking terms and conditions](#).

BOOK NOW

We hope these notes have answered any questions you may have, but do contact us at info@susiero.com if you need any other information.